

S P I R I T

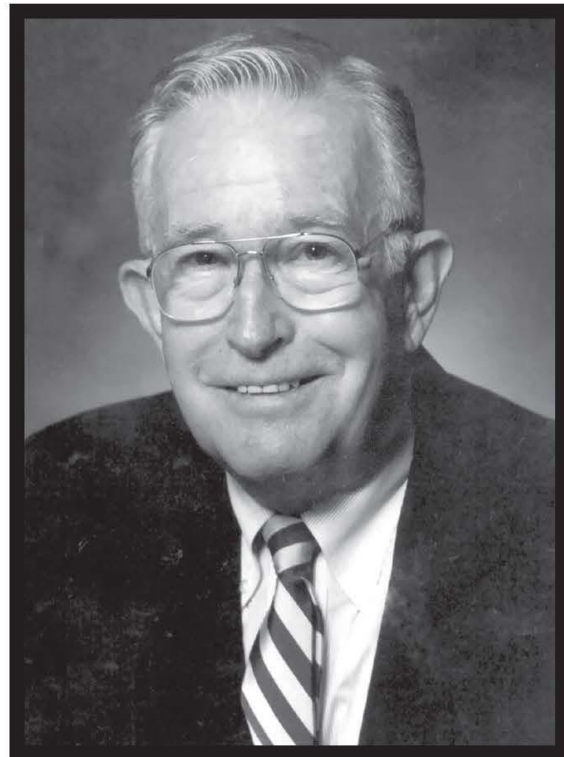
of SouthArk
P R E S I D E N T ' S A W A R D

Charles E. Thomas

Charlie Thomas has been tremendously influential in the growth of South Arkansas Community College from its roots.

A Calion native, Thomas has been connected with higher learning for many years. He was a college professor of anthropology at Washington University in St. Louis for 17 years before moving back home to take over management of the family business, Calion Lumber, in 1975. A year later, he began teaching at Southern Arkansas University-El Dorado as an adjunct professor.

Thomas currently is a member of the college's board of trustees, and also has had a lengthy tenure on the college foundation's board of directors. He is a generous Pathway-Society-level donor to the foundation. Thomas also has served on the board of the South Arkansas Symphony.



Charlie Thomas.

He is a 1950 graduate of Washington University with a bachelor's degree in ancient history and a 1962 graduate of Washington with a master's degree in anthropology and archaeology.

Thomas has two children, Charles "Chad" Thomas III, and Lori Thomas Sinyard.

